

CMC-715 Series



Seven Contact High Voltage Bayonet and Threaded Coupling Connectors

Features:

- Corona Resistant Tapered Interface
- 15 KVDC Operating Voltage
- Temperature Range
–55°C to +125°C
- Sea Level to 70,000 Ft. Operation
- Field or Factory Assembled
- Use W/ Shielded or Unshielded Cable
- Various Hardware Platings Available

Typical Applications:

- Electronic Countermeasures
- Radar
- CRT Displays
- Traveling Wave Tubes
- High Voltage Power Supplies
- Medical Applications

Connectronics 
Corp. *Interconnection Specialists*
a **HEICO** company



Corporate Office
& Manufacturing Facilities:
2745 Avondale • P.O. Box 3355
Toledo, Ohio 43607

Phone: 419-537-0020
Fax: 419-537-0007
E-mail: info@connectronicscorp.com
Visit Us On Our Web Site @
www.connectronicscorp.com

DESCRIPTION

CONNECTRONICS' "CMC" SERIES CONNECTOR ASSEMBLIES UTILIZE TAPERED INTERFACES TO ENSURE CORONA FREE OPERATION THROUGH ALTITUDE AND TEMPERATURE EXTREMES. SIZE 20 CONTACTS ARE DESIGNED TO ACCEPT #16 AWG THRU #24 AWG STRANDED WIRE. THE "CMC-715" SERIES SEVEN CONDUCTOR CONNECTORS OFFER MULTIPLE HIGH VOLTAGE CONNECTIONS WITHIN A COMMON SHELL. THIS CONCEPT OFFERS MAXIMUM RELIABILITY AT A LOW COST FOR THE MOST DEMANDING APPLICATIONS.

OPERATING CHARACTERISTICS:

ELECTRICAL:

VOLTAGE - 15 KVDC
MAXIMUM CURRENT - 7.5 AMPS

ENVIRONMENTAL:

ALTITUDE - SEA LEVEL TO 70,000 FT.
TEMPERATURE - -55°C TO +125°C

MATERIALS AND FINISHES:

SHELL, COUPLING NUT AND RELATED HARDWARE - ALUMINUM ALLOY 6061-T6 PER QQ-A-225/8,
CLEAR, BLACK, OR OLIVE DRAB CADMIUM PLATED PER QQ-P-416, OR ELECTROLESS NICKEL PLATED PER MIL-C-26074.
OPTIONAL STAINLESS STEEL PER ASTM A582, PASSIVATED PER QQ-P-35 IS ALSO AVAILABLE.
INSULATORS - SILICONE RUBBER PER ZZ-R-765.
SOCKET CONTACTS - COMMERCIAL BRONZE, GOLD PLATED PER MIL-G-45204.
PIN CONTACTS - BRASS, GOLD PLATED PER MIL-G-45204.
WIRE (OPTIONAL) - #16 AWG THRU #24 AWG STRANDED, SILICONE, TEFLON OR SILICONE COATED TEFLON INSULATED.
MANY CUSTOM WIRE AND CABLE OPTIONS ARE AVAILABLE. CONSULT FACTORY FOR ADDITIONAL INFORMATION.

- * ALL MATING THREADS SHOWN FOR THREADED COUPLING CONNECTOR SHELLS ARE 1.000 - 20 UNEF.
- * ALL BACKSHELL THREADS SHOWN FOR THREADED COUPLING CONNECTOR SHELLS ARE .875 - 20 UNEF.
- * ALL BACKSHELL THREADS SHOWN FOR BAYONET COUPLING CONNECTOR SHELLS ARE .8125 - 32 UNEF.

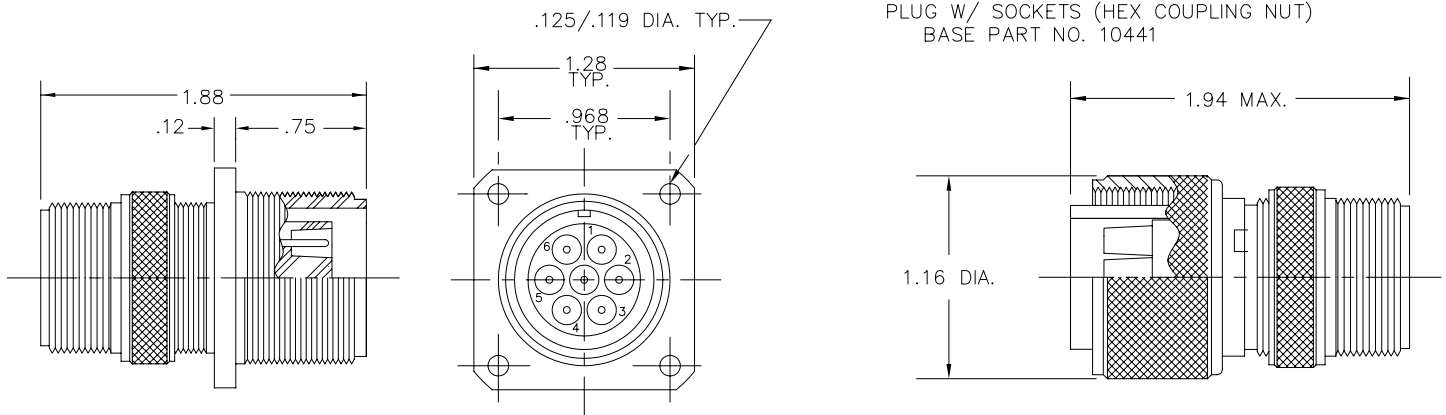
THREADED COUPLING CONNECTORS

BOX MT. RECEPTACLE

BOX MT. RECEPTACLE W/ PINS
BASE PART NO. 10243 (SHOWN)
BOX MT. RECEPTACLE W/ SOCKETS
BASE PART NO. 10098

STRAIGHT PLUG

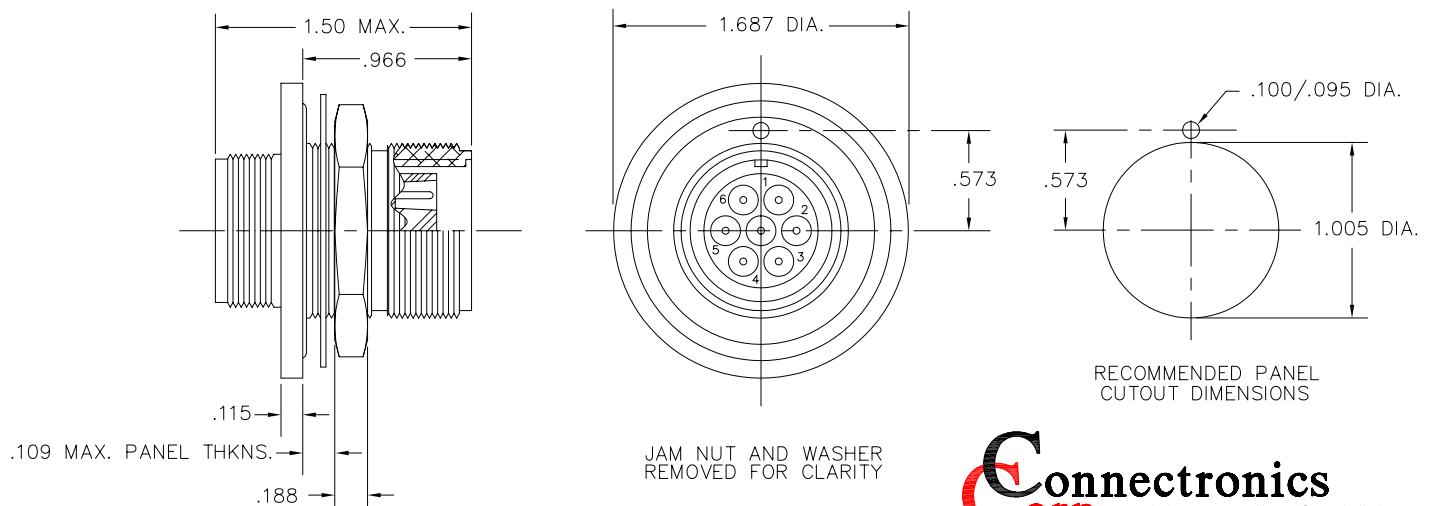
PLUG W/ PINS
BASE PART NO. 10018
PLUG W/ SOCKETS
BASE PART NO. 10124 (SHOWN)
PLUG W/ PINS (HEX COUPLING NUT)
BASE PART NO. 10440
PLUG W/ SOCKETS (HEX COUPLING NUT)
BASE PART NO. 10441



AVAILABLE WITHOUT REAR THREAD ON SHELL.
CONSULT FACTORY FOR PART NUMBER.

JAM NUT MOUNT RECEPTACLE

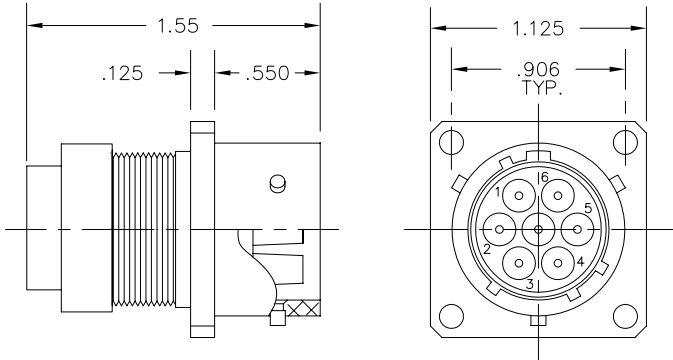
RECEPTACLE W/ PINS
BASE PART NO. 10244 (SHOWN)
RECEPTACLE W/ SOCKETS
BASE PART NO. 10190



BAYONET COUPLING CONNECTORS

BOX MT. RECEPTACLE

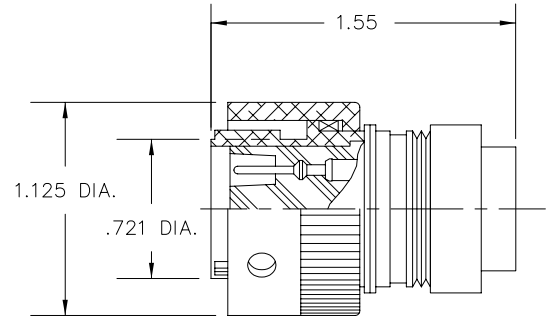
RECEPTACLE W/ SOCKETS
 BASE PART NO. 10042 (SHOWN)
 RECEPTACLE W/ PINS
 BASE PART NO. 10536



AVAILABLE WITHOUT REAR THREAD ON SHELL.
 CONSULT FACTORY FOR PART NUMBER.

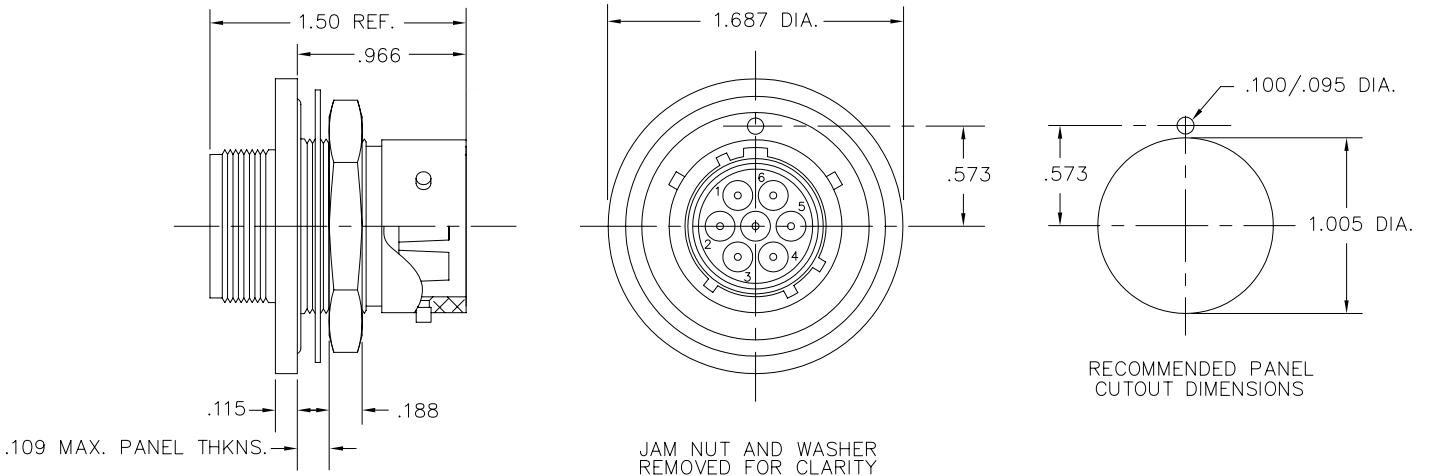
STRAIGHT PLUG

PLUG W/ PINS
 BASE PART NO. 10173 (SHOWN)
 PLUG W/ SOCKETS
 BASE PART NO. 10923



JAM NUT MOUNT RECEPTACLE

RECEPTACLE W/ SOCKETS
 BASE PART NO. 11383 (SHOWN)
 RECEPTACLE W/ PINS
 BASE PART NO. 11382

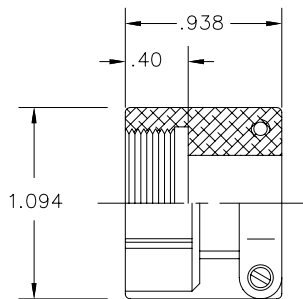


CONNECTOR ACCESSORIES

CONNECTRONICS MANUFACTURES SPECIALTY SHIELD TERMINATION AND STRAIN RELIEF HARDWARE. LET US DESIGN A CUSTOM SOLUTION FOR YOU.

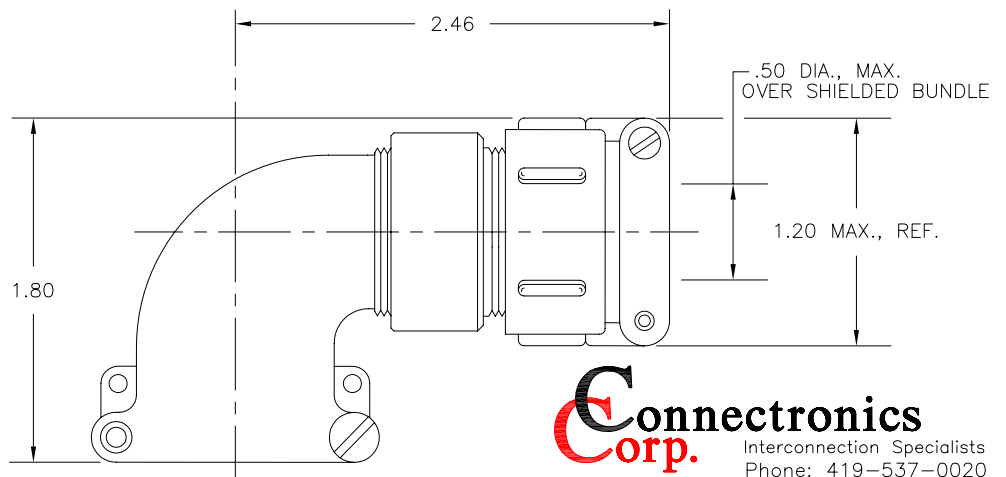
CABLE CLAMP

THREADED COUPLING (SHOWN)
 BASE PART NO. 099-042-XX
 BAYONET COUPLING
 BASE PART NO. 093-016-XX
 (SOME DIMENSIONS MAY VARY)



R.A. BACKSHELL HARDWARE

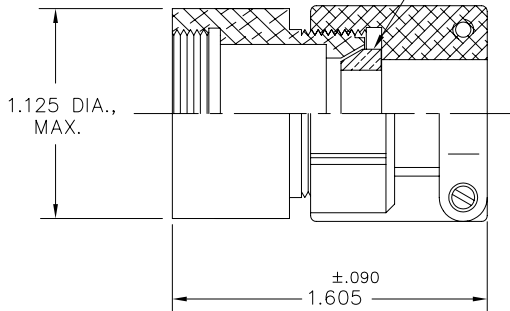
AVAILABLE WITH OR WITHOUT SHIELD TERMINATION HARDWARE.
 CONSULT FACTORY FOR PART NUMBERS



SHIELD TERMINATION HARDWARE

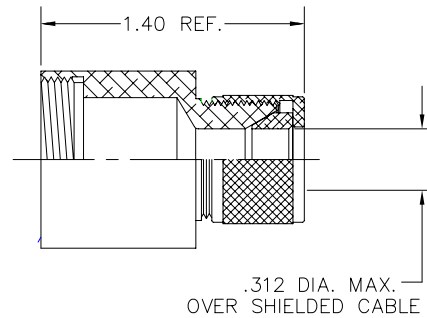
BASE PART NO. 093-009-XX (THREADED COUPLING)
BASE PART NO. 093-120-XX (BAYONET COUPLING)
SHIELD TERMINATION RING DESIGNED
TO ACCEPT CABLE BUNDLE DIA.
(OVER SHIELD) OF .312 TO .590

SHIELD RING AVAILABLE IN VARIOUS
SIZES - CONSULT FACTORY



SHIELD TERMINATION HARDWARE

BASE PART NO. 093-045-02 (THREADED COUPLING)
BASE PART NO. 093-045-01 (BAYONET COUPLING)
SHIELD TERMINATION RING DESIGNED
TO ACCEPT CABLE BUNDLE DIA.
(OVER SHIELD) OF .312 MAX.



ENVIRONMENTALLY SEALED STRAIN RELIEF

FOR APPLICATIONS REQUIRING HARSH ENVIRONMENT PROTECTION, A SILICONE OVERMOLDING CAN BE ADDED TO THE CONNECTORS IN EITHER A RIGHT ANGLE, STRAIGHT, OR 45° CONFIGURATION. CONSULT CONNECTRONICS FOR ADDITIONAL INFORMATION.



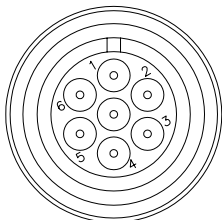
CABLE SEVERAL SEVEN CONDUCTOR SHIELDED AND JACKETED CABLES ARE STOCKED FOR USE WITH THE CMC-715 SERIES.

ORDERING INFORMATION

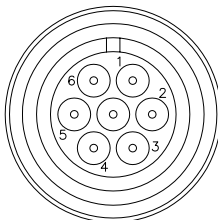
CONNECTORS CAN BE ORDERED WITH THE FOLLOWING HARDWARE PLATING OPTIONS:

CLEAR CADMIUM, OLIVE DRAB CADMIUM, BLACK CADMIUM OR ELECTROLESS NICKEL

CONNECTOR "KITS" ARE SUPPLIED WITH INSULATORS ASSEMBLED INTO SHELL IN EITHER STANDARD OR ALTERNATE KEY CONFIGURATIONS. CONSULT FACTORY FOR PROPER PART NO. DESIGNATIONS ACCORDING TO DESIRED OPTIONS. (CONTACTS PACKAGED SEPARATELY)



ALTERNATE KEY
ARRANGEMENT



STANDARD KEY
ARRANGEMENT